



CESSDA

CESSDA
Consortium of
European Social Science
Data Archives

A pan-European Research Infrastructure for the social sciences



CESSDA, the Consortium of European Social Science Data Archives, provides large scale, integrated and sustainable data services to the social sciences. It brings together social science data archives across Europe, with the aim of promoting the results of social science research and supporting national and international research and cooperation.

CESSDA is organised as a limited company under Norwegian law and is owned and financed by the individual member states' ministry of research or a delegated institution.

Furthermore, it was recognised by the European Strategy Forum on Research Infrastructures (ESFRI) as a Landmark Research Infrastructure in the [ESFRI 2016 Roadmap](#) in the field of social and cultural innovation.

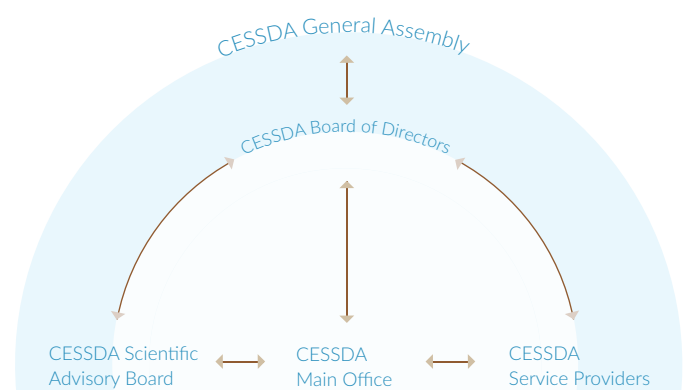
Fifteen European countries are members of CESSDA.

The CESSDA 2015 and 2016 Work Plans are made up of a significant number of ongoing internal projects, all of which aim at strengthening the current infrastructure, mostly in the area of technical development.

Four [CESSDA Working Groups](#) have been designated as advisory bodies to the Board of Directors and the Managing Director:

1. CESSDA Trust Support Group
2. CESSDA Technical Group
3. CESSDA Training Group
4. CESSDA Communications Group.

Organisational Chart



National Data Services

The map shows the location of the social science data archives that make up the pan-European research infrastructure that is CESSDA.

15 CESSDA members

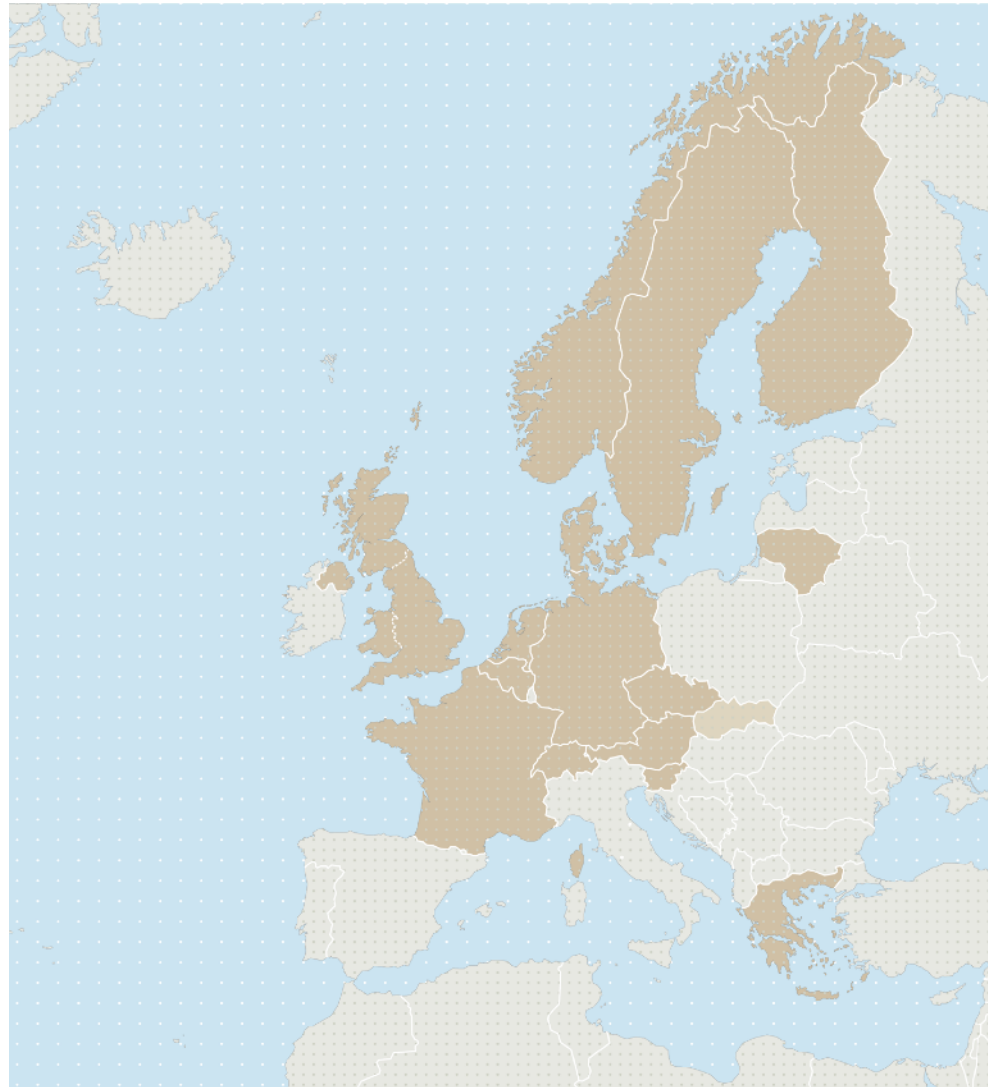
AT - AuSSDA
BE - SOHDA
CZ - CSDA
DK - DDA
FI - FSD
FR - PROGEDO/Réseau Quetelet
DE - GESIS
EL - So.Da.Net
LT - LiDA
NL - DANS
NO - NSD
SI - ADP
SE - SND
CH - FORS
UK - UKDS

1 observer

SK - SASD

To find out more about the data services offered in each country visit the National Data Services section of the [website](#).

CESSDA features on the ESFRI online map to locate the ESFRI infrastructures and their partner facilities. The map also displays the European research Infrastructures that are established as ERIC (European Research Infrastructure Consortium). Visit the [map](#).

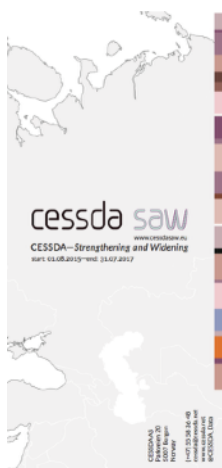


Each member is represented by a national institution, a Service Provider, which is responsible for providing relevant services. The Service Providers constitute the CESSDA main resource, and CESSDA integrates the work of the Service Providers by establishing a one-stop shop for data location, access, analysis and delivery. Software development will increase the quality of available data. Data from sources currently outside CESSDA will also become available. CESSDA will create a more dynamic knowledge management web, contribute to metadata initiatives, improve existing technical infrastructures, promote capacity building, support less developed and less well-resourced organisations, and work toward a widening of CESSDA.

CESSDA and its data service providers take part in a number of international projects of relevance to its mission.

Visit the [project section](#) of the website to find out more about our projects.

Disclaimer: This project has received funding from the European Union's Horizon 2020 research and innovation programme under grant agreement number 674939.



Disclaimer: This project has received funding from the European Union's EU Research and Innovation programme Horizon 2020 under grant agreement number 654221.



European Projects

European Horizon 2020 projects which CESSDA is involved in:

cessda saw

The CESSDA SaW project is aimed at strengthening and widening the already existing CESSDA Consortium. Barriers to membership exist in many potential member countries, however, the potential value and benefits from CESSDA membership are huge.

One of the activities of the project will be to map existing relevant infrastructures in potential member countries.

The overarching impact of the project will be to initiate the transformation of the user experience of social science data in the ERA, resulting in a transformation of the evidence and insight available to those tackling the social and economic issues of Europe. Visit: www.cessdasaw.eu



The social sciences have a vital role to play in helping national and international policy makers to tackle major societal challenges. A solid bases of socio-economic evidence - including survey data on individuals' wellbeing, attitudes and behaviour - is crucial for understanding how society works, to identify needs and to inform decisions on how to bring about change.

Synergies for Europe's Research Infrastructures in the Social Sciences (SERISS) is a collaboration between six of Europe's leading data research infrastructures. The project aims to harmonise and strengthen social science research across Europe and beyond and to equip policy makers with a solid base of the highest-quality evidence with which to tackle the grand societal challenges.

It brings together three European Strategy Forum on Research Infrastructures (ESFRI) 'Landmark Research Infrastructures': the European Social Survey (ESS ERIC), the Survey for Health Ageing and Retirement in Europe (SHARE ERIC) and the Consortium of European Social Science Data Archives (CESSDA AS), with the Generations and Gender Programme (GGP), European Values Survey (EVS) and the WageIndicator Survey. Visit: www.seriss.eu

Disclaimer: This project has received funding from the European Union's Horizon 2020 research and innovation programme under grant agreement number 644564 - BigDataEurope.



Large amounts of data are being produced permanently, and when these are analysed and interlinked they have the potential to create new knowledge and intelligent solutions for the economy and society. Innovative technologies, strategies and competencies can ensure the beneficial use of big data to address societal needs.

Big Data Europe aims to develop an adaptable, easy to deploy and use solution, which will allow interested user groups to extend their big data solutions or introduce big data technologies to their business processes.

CESSDA will build a network of stakeholders active in big data in the Social Sciences and Humanities as well as benefit from a big data platform for the sector which is being developed in the framework of the project. Visit: www.big-data-europe.eu

CESSDA Training

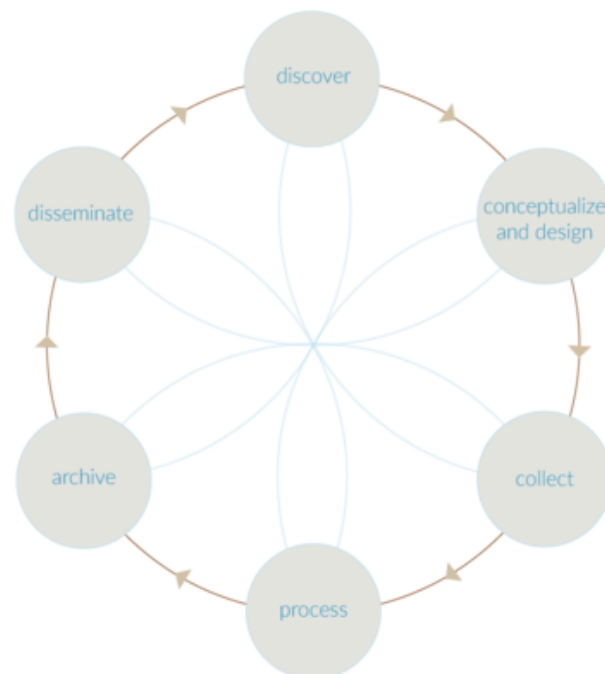
CESSDA Training promotes research data management and data curation in the social sciences and is led by the German Service Provider GESIS - Leibniz Institute for the Social Sciences. It addresses the needs of two communities, that of research and digital preservation.

The purpose is to ensure excellence in the creation, management, and long-term preservation of research data. By promoting the adoption of standards in research data management and archiving, we support data availability, re-use, and the repurposing of archived data.

Research Data Lifecycle

The CESSDA Training team offers support at every stage of the research data lifecycle, from conception to archiving and re-use.

Find out more and see the upcoming trainings on the CESSDA Training section of the [website](#).



Contact CESSDA:

CESSDA AS
Parkveien 20
5007 Bergen
+47 55 58 36 48
cessda@cessda.net
[@CESSDA_Data](https://www.cessda.net)
www.cessda.net